



AIA
Columbus



ARCHITECTURE
AWARDS



OUR MISSION

AIA Columbus is a visionary membership organization providing advocacy, leadership, and resources to architects to design a better world.

2020 AIA Columbus Architecture Awards

JURY



Billie Faircloth, AIA – Jury Chair

Billie Faircloth is a practicing architect, educator, and partner at KieranTimberlake, an award-winning architecture firm recognized for its environmental ethos, research expertise, and innovative design. As the firm's Research Director, she leads a transdisciplinary group of professionals leveraging research, design, and problem-solving processes from diverse fields including environmental management, chemical physics, materials science, and architecture. Billie has published and lectured internationally on research methods for a transdisciplinary and trans-scalar design practices. Her articles have been published by the Journal of Architectural Education, Princeton Architectural Press, Royal Danish Academy of Fine Arts, and ACADIA.



Karen Blanchard, AIA

Karen is a Principal at SITIO architecture + urbanism where she is focused on delivering design excellence to multifaceted projects. Her vast experience ranges in scale and typology – she is fully engrossed as an architect on civic and cultural, residential, educational and mixed-use projects. Karen's commitment to design and the profession has resulted in numerous project design awards as well as being presented the AIA Philadelphia Young Architect award. Karen was the 2018 President of AIA Philadelphia, served 6 years as the Co-Chair of the AIA Philadelphia Women In Architecture Committee, and spent 5 years on the AIA Philadelphia Board of Directors and their Executive Committee.



Jules Dingle, FAIA

Jules Dingle is a Principal and founding partner at DIGSAU, a Philadelphia-based studio with a broad view of architecture, how it is made, and who makes it. His work balances an interest in emerging technologies with a fondness for the expressive potency of chance, improvisation, and low-tech solutions that celebrate the act of making. He received a Bachelor of Architecture from the University of Notre Dame and a Masters of Architecture from University of California Berkeley. Jules has served on the AIA Philadelphia and Pennsylvania Boards of Directors. Jules was recognized with the Philadelphia Young Architect Award in 2012 and AIA Fellowship in 2018.



Fátima Olivieri-Martinez, AIA

Fátima is a Principal at KieranTimberlake, an award-winning architecture firm recognized for its environmental ethos, research expertise, and innovative design. In nearly a decade at KieranTimberlake, Fátima has been involved with projects including the award-winning renovation of the historic Dunster House at Harvard University. She also spearheaded a collaboration to create a graduate-level design studio focused on designing a visionary school in Puerto Rico, where she is from, to build resiliency following the devastation of Hurricane Maria. Fátima received the 2019 Young Architect Award from AIA Philadelphia.



Eric Oskey, AIA

Eric Oskey is a partner and Technical Director of the award-winning firm Moto Designshop (Moto) which is recognized for well-considered and crafted projects. Eric brings into being Moto's creative vision through the sophisticated application of assemblies, material science, building systems, and construction knowledge. In 2018 he was individually awarded a prize as a Minority Business Leader by the Philadelphia Business Journal and in 2019 the Outstanding Asian American Business by the Asian American Chamber of Commerce of Greater Philadelphia. He holds a Bachelor of Architecture from Drexel University and a Master of Architecture from Cornell University.

Large Projects

Projects 5,000 square feet and over





Lifeline of Ohio – Renovation, Addition, and Donor Memorial

Rogers Krajnak Architects, Inc. | Columbus, OH

Consultants: EDGE, Resource International, Inc., SMBH, Karpinski Engineering, Miles McClellan Construction



Arts and College Preparatory Academy

TRIAD Architects | Columbus, OH



Cory Klein Photography



Dublin Historic District Parking Garage

Moody Nolan | Dublin, OH



Consultants: EMH&T, Schaefer, Prater Engineering, Turner Construction



Photography ©Brad Feinknopf

Michael B. Coleman Government Center

DesignGroup & Schooley Caldwell | Columbus, OH

Consultants: MKSK, Korda Engineering, SMBH, Dynamix Engineering, Messer Construction

Photography ©Lauren K. Davis/feinknopf

The Canopy Hotel By Hilton

PRIME AE Group | Columbus, OH

Consultants: Thorson Baker Associates, EP Farris, Krause & Sawyer, Next Step Design, Realm Collaborative, Selles Lighting Design, Turner Construction



Ohio State Bank JBAD | Bexley, OH

Consultants: Point One Design, JGA, Point One, American StructurePoint, Roslovic Construction

Achatz Hall of Science and John and Toni Murray Research Center

BHDP | Fort Wayne, IN

Consultants: Karpinski Engineering, Schaefer, Engineering Resources, Tonn and Blank Construction

William Manning Photography



Tri Star Career Compact

Fanning Howey | Celina, OH



Consultants: Stephan Howick, ASLA, Jezerinac Geers & Associates, Access Engineering Solutions, Peterson Construction Company



Photography ©Brad Feinknopf



CenturyLink Technology Center of Excellence

Moody Nolan | Monroe, LA



Consultants: EDGE, Morphy Makofsky, Paul J. Ford & Company, Communications Engineering Consultants, Stratum Engineering, LLC, Yates Construction



James Steinkamp, Connor Steinkamp

University of Cincinnati Health Sciences Building

Moody Nolan & Perkins+Will | Cincinnati, OH

Consultants: Vivian Llambi & Associates, CMTA, Inc., Schaefer, Code Consultants, Inc., BC+E, Messer Construction

AC Hotel by Marriott at Bridge Park Development

Moody Nolan | Dublin, OH

Consultants: MKSK, EMH&T, Schaefer, Prater Engineering, Brackett Builders, Inc.



Pomerene Hall

Acock Associates Architects | Columbus, OH

Consultants: MKSK, Kleinger's, SMBH, Fishbeck, Dupler Environmental Consultants, Gilbane Building Company



Kokosing Corporate Office

Acock Associates Architects | Westerville, OH



Consultants: EDGE, Korda, Corna Kokosing





James Lehr Kennedy Engineering Building

BHDP | Ada, OH



Consultants: EDGE, Choice One Engineering, Jezerinac Geers & Associates, Korda, Metro CD Engineering, Corna Kokosing Construction



Photography ©Brad Feinknopf



School of the Arts

Moody Nolan | Cleveland, OH



Consultants: McKnight Associates, Westlake Reed & Leskosky, Barber & Hoffman, TriMark SS Kemp, Blundall Associates, A.M. Higley and R. L. Bowen





CITY COLLEGES of CHICAGO

Malcolm X

Education that Works

Malcolm X College and School of Health Sciences

Moody Nolan | Chicago, IL

Consultants: Hitchcock Design Group, Tilton, Kelly & Bell, HERA, IMEG, Thorton Thomasetti, Inc., Clark Construction Group-Chicago LLC, McKissack & McKissack Midwest, Inc., Old Veteran

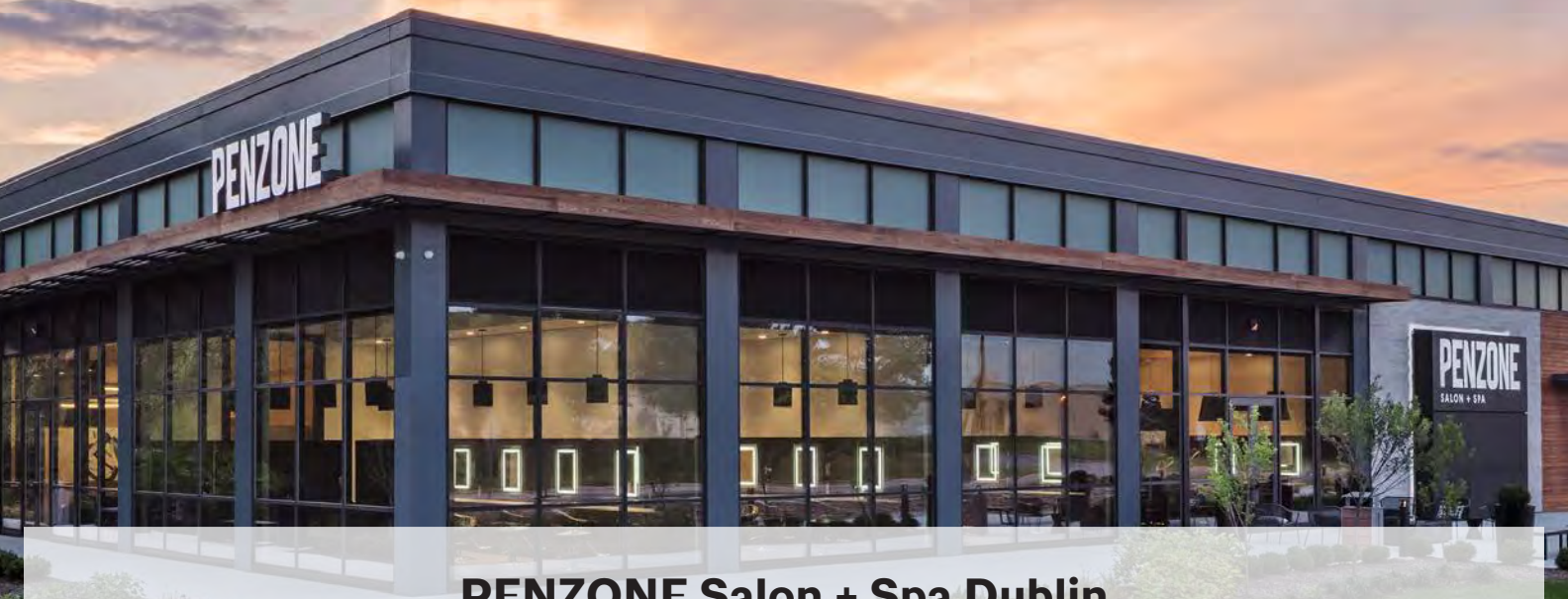
UPPER ARLINGTON VETERINARY HOSPITAL

Upper Arlington Veterinary Hospital

GUNZELMAN architecture + interiors | Upper Arlington, OH

Consultants: Barber Hoffman, Karpinski Engineering, EMH&T, Mulberry Design Build

Cory Klein Photography



PENZONE Salon + Spa Dublin

Meyers + Associates Architecture | Dublin, OH

Consultants: POD Design, Jezerinac Geers, Advanced Civil Design, Prater Engineering Associates, Gioffre Construction

St. Catharine of Siena Catholic Church Parish Center and Adoration Chapel

Harper Architectural Studio | Columbus, OH

Consultants: Korda, Shirk & O'Donovan Consulting Engineers, Corna Kokosing



AC Hotel Nulu

Meyers + Associates Architecture | Louisville, KY

Consultants: Carman, Jezerinac Geers, Prater Engineering Associates, Myers Foodservice Equipment,

Jeff Goldberg at Esto



Wintrust Arena at McCormick Place

Moody Nolan | Chicago, IL



Consultants: Site Design Group, Magnusson Klemencie Associates, IMEG, Terra Engineering, AECOM, Clark Construction

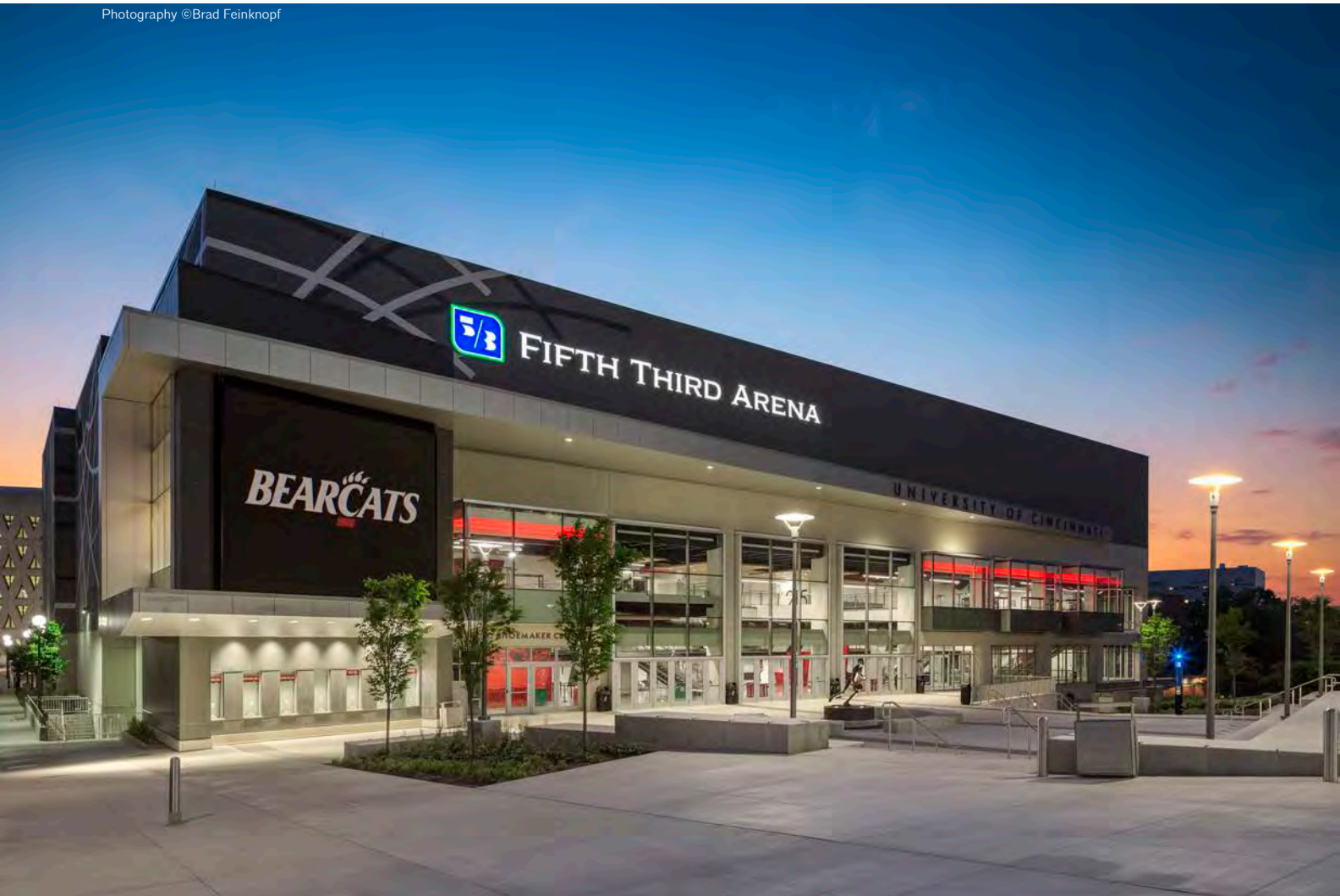


Norman Ai

Gravity

NBBJ | Columbus, OH

Consultants: iCrave, Korda, EMH&T, Prater Engineering, Continental Building Systems



University of Cincinnati Fifth Third Arena Renovation

Moody Nolan | Cincinnati, OH



Consultants: Vivian Llambi & Associates, Moody Engineering, THP Limited, Inc., IMEG, Dynamix Engineering, Skanska - Megen Construction (joint venture)



University of Connecticut Student Recreation Center

Moody Nolan | Storrs, CT

Consultants: Copley Wolf Design Group, Langan Engineering & Environmental Services, Inc., BVH Integrated Services,
Counsilman-Hunsaker, Turner

Pointview Elementary School

TRIAD Architects | Westerville, OH



Jameson Crane Sports Medicine Institute

DesignGroup | Columbus, OH

Consultants: MKSK, Kabil Engineering, Korda, Metro CD Engineer, Lend Lease

Photography ©Brad Feinknopf



Molyet Village Community Building

WSA | Mansfield, OH



Consultants: Cyp Studios, Dynamix Engineering, Jezerinac Geers, EMH&T, Studer-Obringer Construction



Health and Wellness Complex

DesignGroup | Lancaster, OH

Consultants: MKSK, Osborn Engineering, Counsilman Hunsaker, Strategic Workplace Solutions (LOTH), The Boldt Company



886 North High Street

archall | Columbus, OH

Consultants: EP Ferris & Associates, Prater Engineering, Jezerinac Geers, Black Ink, Elford Construction



Mary Rutan Health Center

DesignGroup | Bellefontaine, OH

Consultants: PLANIT Studios, Korda, Nauman & Zelinski, IBI Group, Marker Construction

Small Projects

Projects less than 5,000 square feet



Photography ©Brad Feinknopf

Victorian Village Residence

Rogers Krajnak Architects, Inc. | Columbus, OH

Consultants: EDGE, SMBH, NJW Construction



Nocterra Brewing Company

SHYFT Collective | Powell, OH



Consultants: G2 Planning + Design, Prater Engineering, American Structure Point, Jezerinac Geers, Arccon Construction





Heidelberg University - Hoernemann Refectory Addition

SHYFT Collective | Tiffin, OH



Consultants: Jezerinac Geers, Sands Decker, Prater Engineering, Ashland Equipment, JDH Construction





McKay Residence

JMAC Architects & Planners | Jackson, OH



Consultants: Paul Troyer Builders





The Legacy Project

Moody Nolan | Columbus, OH

Consultants: EDGE, Dynamix Engineering, Jezerinac Geers, Moody Engineering, SIMCO Construction

Photography © Brad Feinknopf



Riverside House

JBAD | Dublin, OH



Consultants: EDGE, SMBH, Sullivan Builders Inc.



Greg Dutton

The Hut

Midland Architecture | Flushing, OH

Consultants: Matt Lokay, Conway Engineering, Withrow Contracting, LLC



Mission Salon

Tim Lai Architect | Dublin, OH

Consultants: Point One Design, Schaefer, Hanlin Rainaldi Construction



Hamlet Residence

GUNZELMAN architecture + interiors | Columbus, OH

Consultants: Midnight Blue, LLC

Sam Brown with MoodyNolan

Private Residence

Moody Nolan | Westerville, OH

Consultants: EDGE, Moody Engineering, Jezerinac Geers & Associates, Inc., Prater Engineering, Bentley Vistain

Photography © Brad Teinknor

The Scotts Miracle-Gro Foundation Children's Garden

DesignGroup | Columbus, OH

Consultants: Terra Design Studios, Korda, Hydro Dramatics, WC3 Design & Consultant, Miles McClellan

Interior Architecture





RJE Business Interiors

WSA | Columbus, OH



Consultants: Catalyst Engineering, Premier Commercial Construction





White Castle Home Office

M+A Architects | Columbus, OH



Consultants: Prater Engineering, Jezerinac Geers & Associates, Bluewater Technologies Group, Inc., Elford





Penzone Salon & Spa

JBAD | Columbus, OH

Consultants: Point One Design, Gioffre Companies Inc.



Huntington Center

Design Collective | Columbus, OH



Consultants: MKSK, Prater Engineering, SMBH, Ruscilli Construction



Kate Horgan Photography

Arena Grand Theater Renovation Into Innovation

The Columbus Architectural Studio | Columbus, OH

Consultants: Prater Engineering, Jezerinac Geers and Associates, Elford



SOW Plated

Design Collective | Upper Arlington, OH



Consultants: EM Engineering, Shaffer Construction



Nationwide Children's Hospital Big Lots Behavioral Health Pavilion

NBBJ | Columbus, OH

Consultants: Architecture +, Kathleen Baldwin Architecture, PLANIT Studios, HAWA, SMBH, EMH+I, Turner Construction

Cory Klein Photography

Columbus Metropolitan Library - Hilliard Branch

DesignGroup | Hilliard, OH

Consultants: MKSK, Korda, SMBH, Turner Construction Company

Bath & Body Works Research and Development Center

WSA | New Albany, OH

Consultants: EMH&T, M Engineering, SMBH, Reitano Design Group, Danis Construction

Architectural Detail



Photography ©Lauren K. Davis/feinknopf

Factory #6 Stair Detail

JBAD | Columbus, OH

Consultants: Blackburn's Fabrication, Inc.

Photography ©Brad Feinknopf



Kokosing Corporate Headquarters, Finned Ceiling/Light Detail

Acock Associates Architects | Westerville, OH

Consultants: EDGE, Korda





Kokosing Corporate Office Entrance Vestibule

Acock Associates Architects | Westerville, OH



Consultants: EDGE, Korda, Corna Kokosing





T. Marzetti Company

Unispace | Columbus, OH

Consultants: C&T Design & Equipment Co., Advanced Engineering Consultants, Ltd

Innovation in Technology





Graduate Columbus

Meyers + Associates Architecture | Columbus, OH

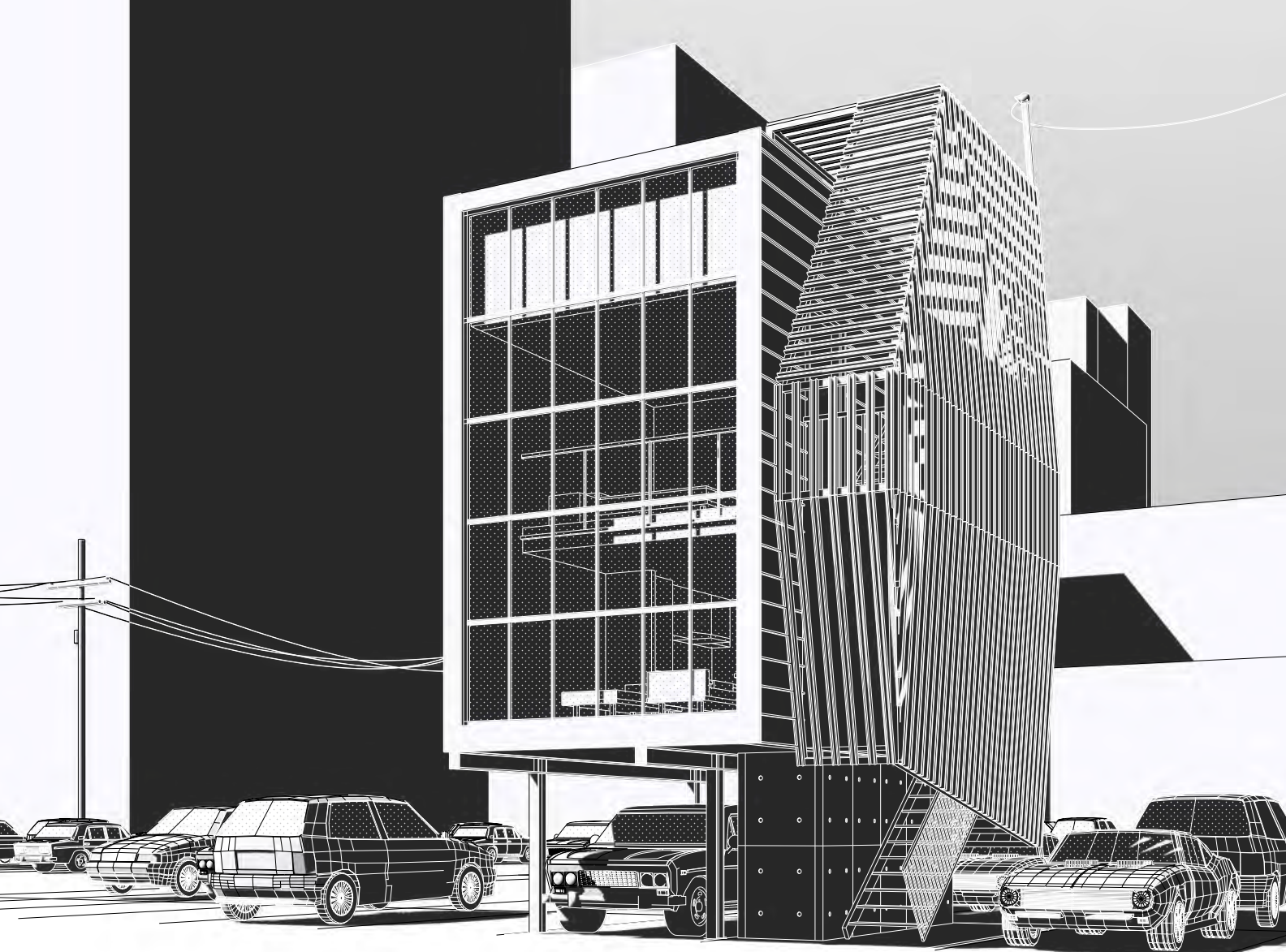


Consultants: Advanced Civil Design, Advanced Civil Design, Jezerinac Geers & Associates, Prater Engineering, VDA (Van Deusen & Associates), The Whiting-Turner Contracting Company



Unbuilt





aParkment

JBAD | Columbus, OH





Buckeye Painting
SHYFT Collective | Powell, OH

Consultants: Prater Engineering, Jezerinac Geers, Structure Point,

2020 AIA Columbus Board of Directors



Mike Vala, AIA
President
BSHM Architects

Aleks Daskalov, AIA
President-Elect
FMS Architects

Matt Toddy, AIA
Treasurer
Design Collective

Jennifer Rittler, AIA
Secretary
Moody Nolan

Yanitza Brongers-Marrero, AIA
Past President
Moody Nolan

Nicholas Bittner
Director
BDT Architects & Designers

Hannah Evwaraye, AIA
Director
Moody Nolan

Laurie Gunzelman, AIA
Director
GUNZELMAN architecture + interiors

Melissa Olson, AIA
Director
Burns & McDonnell

Jerome Scott, AIA
Director
Jerome M. Scott Architects

Matthew Teismann, AIA
Director
MKC Architects

Joshua Hostetler, Assoc. AIA
Associate Director
DesignGroup

John Meegan, AIA
AIA Ohio Delegate
Gutknecht Construction

Sara Boyer, AIA
AIA Ohio Alternate
Moody Nolan

Andrew Cruse, AIA
Education Liaison
Knowlton School of Architecture,
The Ohio State University

Omar Alvarado
AIAS President

2020 AIA Columbus Committee on Design

Lindsay Mitchell, AIA

Co-Chair

Meyers + Associates Architecture

Aimee Moore, Assoc. AIA

Co-Chair

Knowlton School of Architecture

Al Argyris, Assoc. AIA

JBAD

William Cody, AIA

BSHM Architects

Jeff Jilek, Assoc. AIA

ms consultants

Kurt Miller, AIA

Meyers + Associates Architecture

Brian Peterson, AIA

Meyers + Associates Architecture

Clark Sabula, Assoc. AIA

JBAD

Jessica Sprankle, Assoc. AIA

archall

2020 AIA Columbus Architecture Awards Sponsors



2020 AIA Columbus Title Sponsors



Special Thanks

Media Advisor

Sarah Bacha
SMB Communications Ltd.

Staff

Elizabeth Krile, CAE
Executive Director

Qisti Gitosuputro
Programming and Communications Coordinator



AIA
Columbus

Printing provided by


Document Solutions