

THE WEIGHT OF ARCHITECTURE

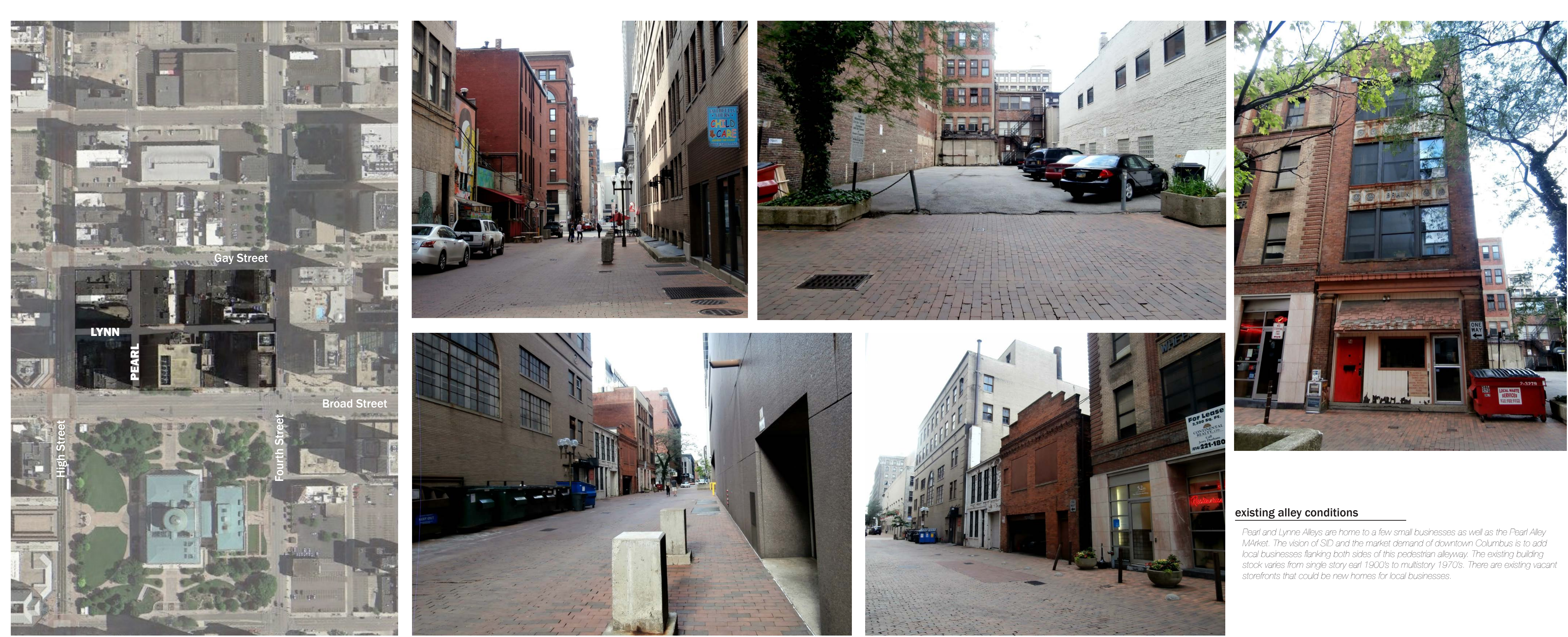
AIA COLUMBUS

SID's goal is to assist local businesses in having a physical presence in downtown Columbus through a multitude of programs. We see our partnership with SID as an excellent opportunity to reimagine the existing fabric of Lynn and Pearl Alleys and provide the community with a more vibrant urban environment. The Weight of Architecture program will offer us great opportunities to directly connect with the Columbus Community and show how collaborative engagement can solve problems through design and enhance the built environment.

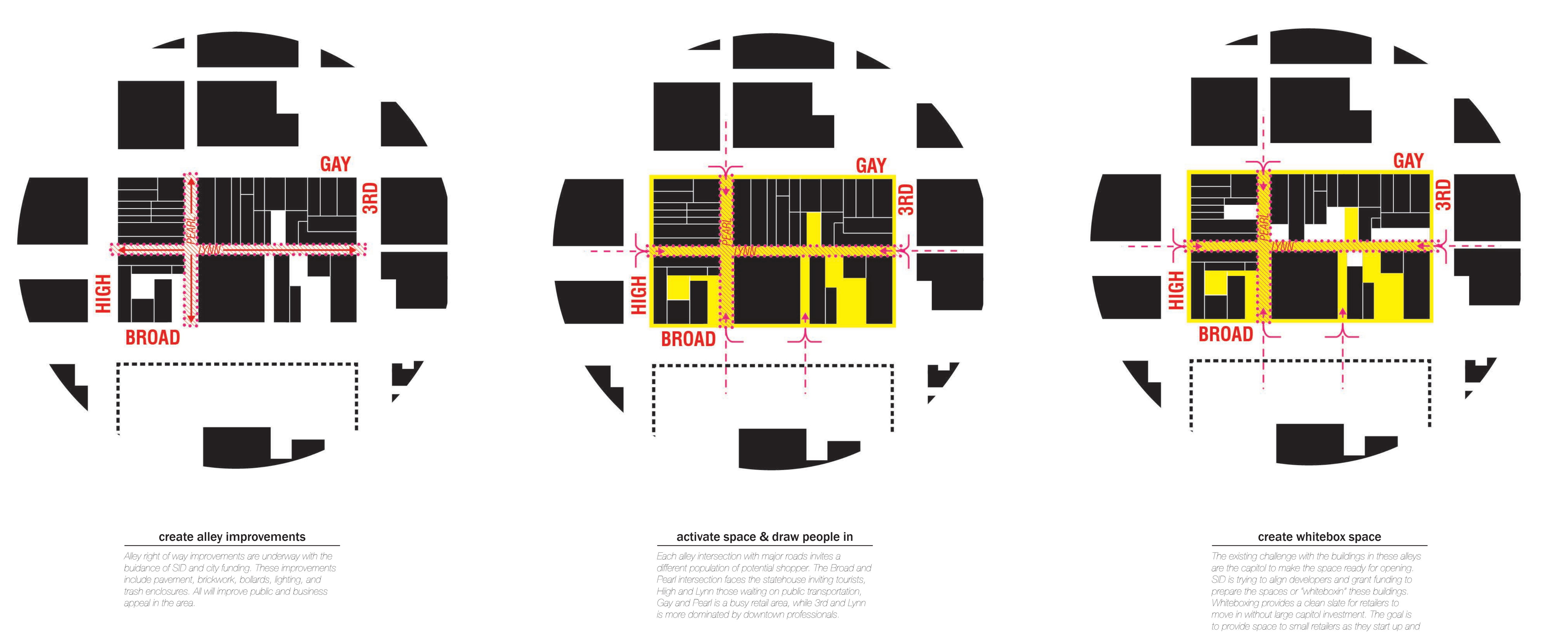
SID Public Services has been working towards developing a retail alley at Pearl and Lynn alleys one block north of the Statehouse. City funding has been provided to improve the right of ways within the alleys, and now the need is focused on the existing stock of buildings. Our intent is to create a marketing/development package showing both retailers and developers the great opportunity at this location. This will likely be similar but separate packages for these two audiences. We are seeking your help/expertise in retail and developer work, as well as architect and designer interested in revivifying our downtown.

S.I.D. (Special Improvement District)

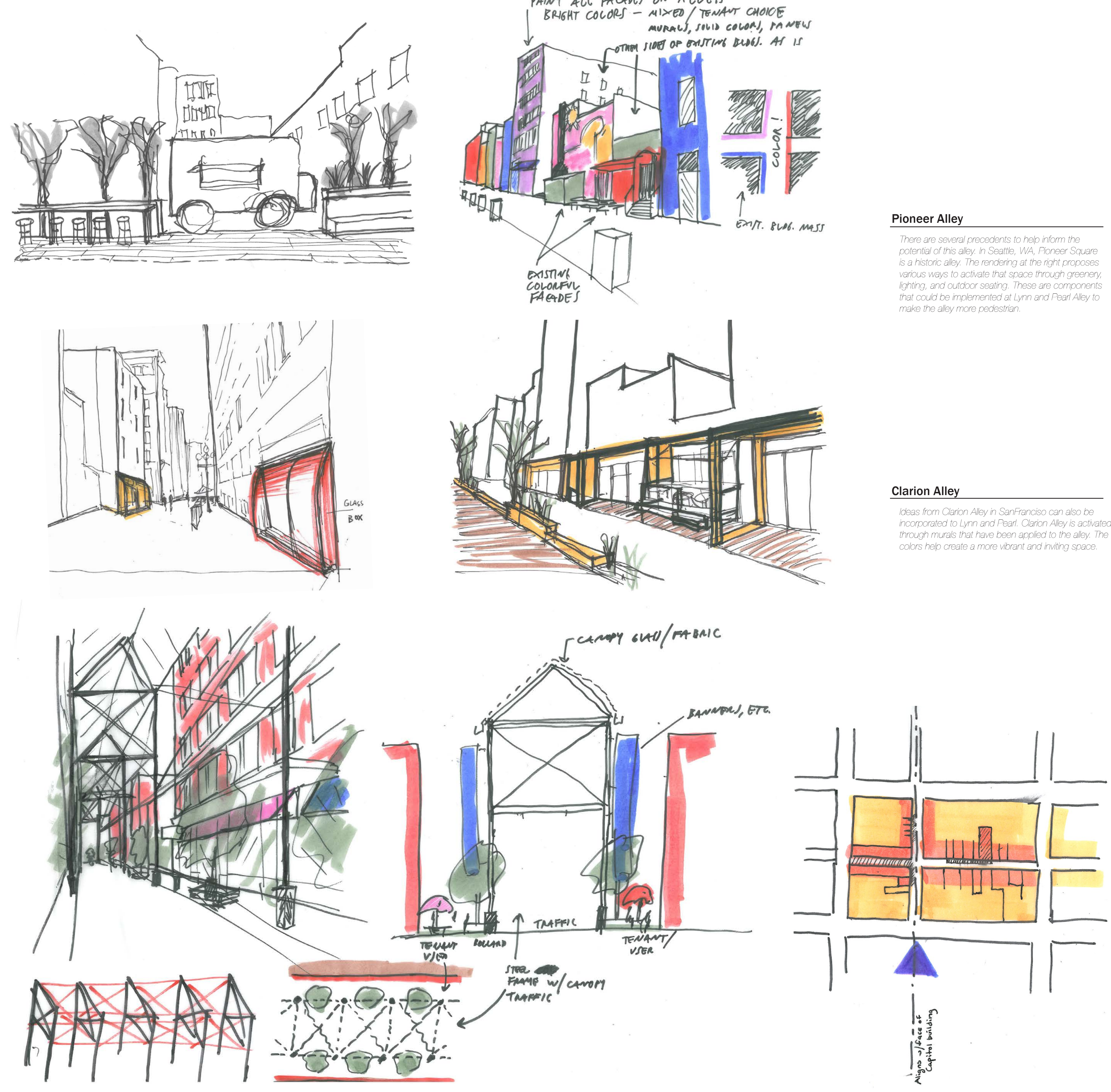
Promote and Provide Retail Space to Local Businesses



Existing Conditions



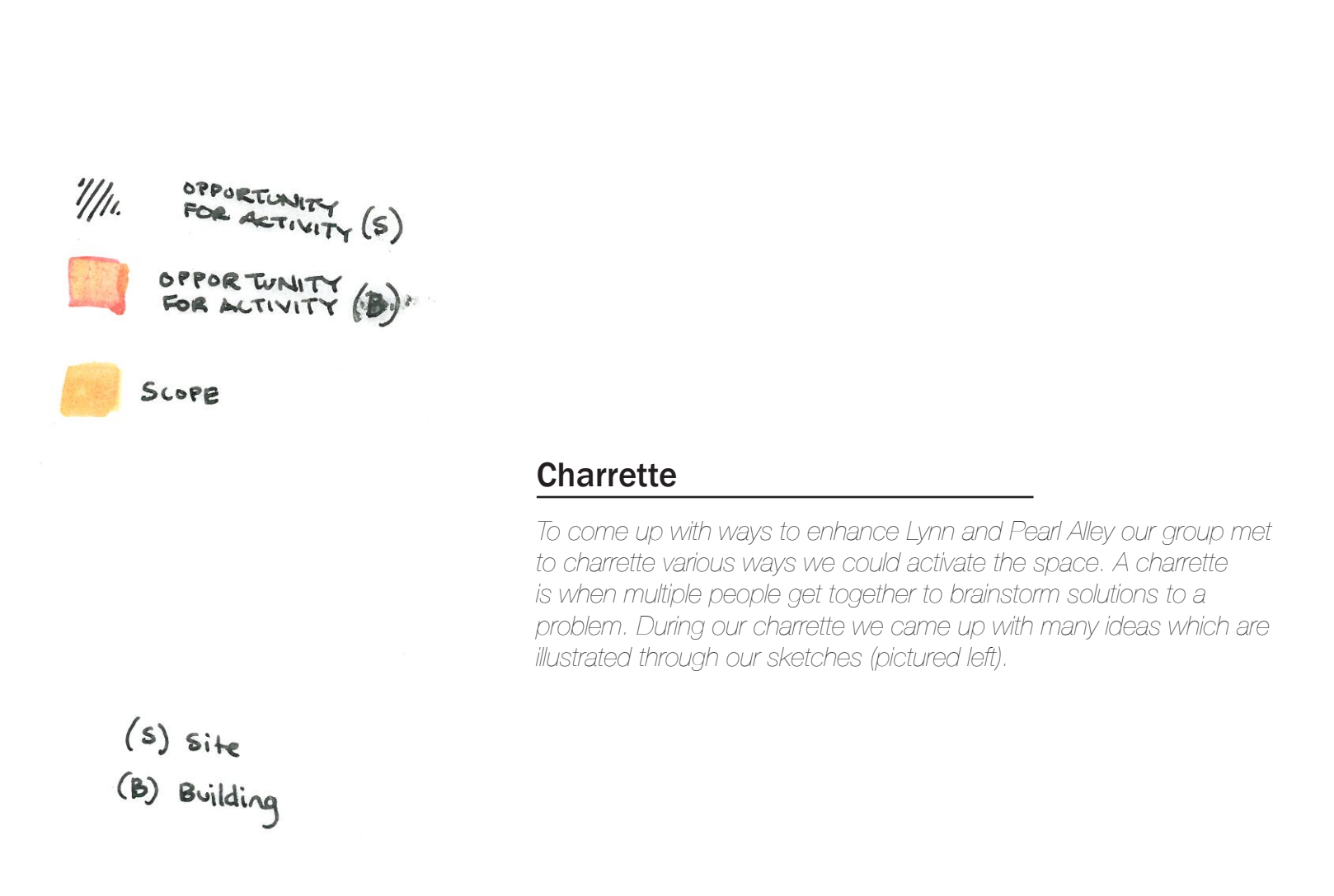
Strategy



PIONEER SQUARE ALLEYS | DESIGN PIONEER PASSAGE



Sirt Design Company | Olson Kundig Architects | Lenn Schweininger Light Projects



Ideas



Future