

Project Summary / Program Statement:

After the implementation of its Second-year Transformational Experience Program (STEP) requiring sophomores to live on campus, The Ohio State University needed increased housing capacity. The design team conducted a housing study and determined that the existing South High Rises provided an opportunity to not only increase bed counts, but also create more density on campus and further the University's sustainability goals.

The challenges we faced were formidable. The buildings needed significant mechanical system upgrades and lacked functional, inviting common spaces. The \$120 million, 3-year construction project would be happening on the nation's third largest campus with over 50,000 students; the importance of meticulous planning cannot be overstated. The team developed a unique strategy to transform the two pairs of 11-story dormitories, originally built in the 1950's: *connect them*, creating two buildings from four. The additions, or "bridges," reenergized the existing towers and provide new, dynamic spaces to enhance the student experience, a key goal of OSU's Office of Student Life.

The renovated halls also provide modern residences and amenities that students want. Spaces dedicated to student life are now found throughout. New entry lobbies with openings in the ground floor slabs bring in natural light, turning the previously dark basements into welcoming, usable spaces. On the upper floors, new lounges create areas for student activity, promoting a sense of community. Double-height "sky lounges" provide space for large gatherings, with excellent views of downtown Columbus and the rest of campus.

Sustainability considerations informed the design at every step. Over 95% of the existing buildings were re-used rather than demolished. A 400-well geothermal well field was installed under existing green space to serve the South High Rises, and the new high-performance envelope resulted in a 20% reduction in cooling loads, allowing for downsized equipment and operational savings. The project is pursuing LEED Silver certification.

A17.01

Submission Type:
Architecture Award

Project Location:
Columbus, OH

Project Completion Date:
August 2013

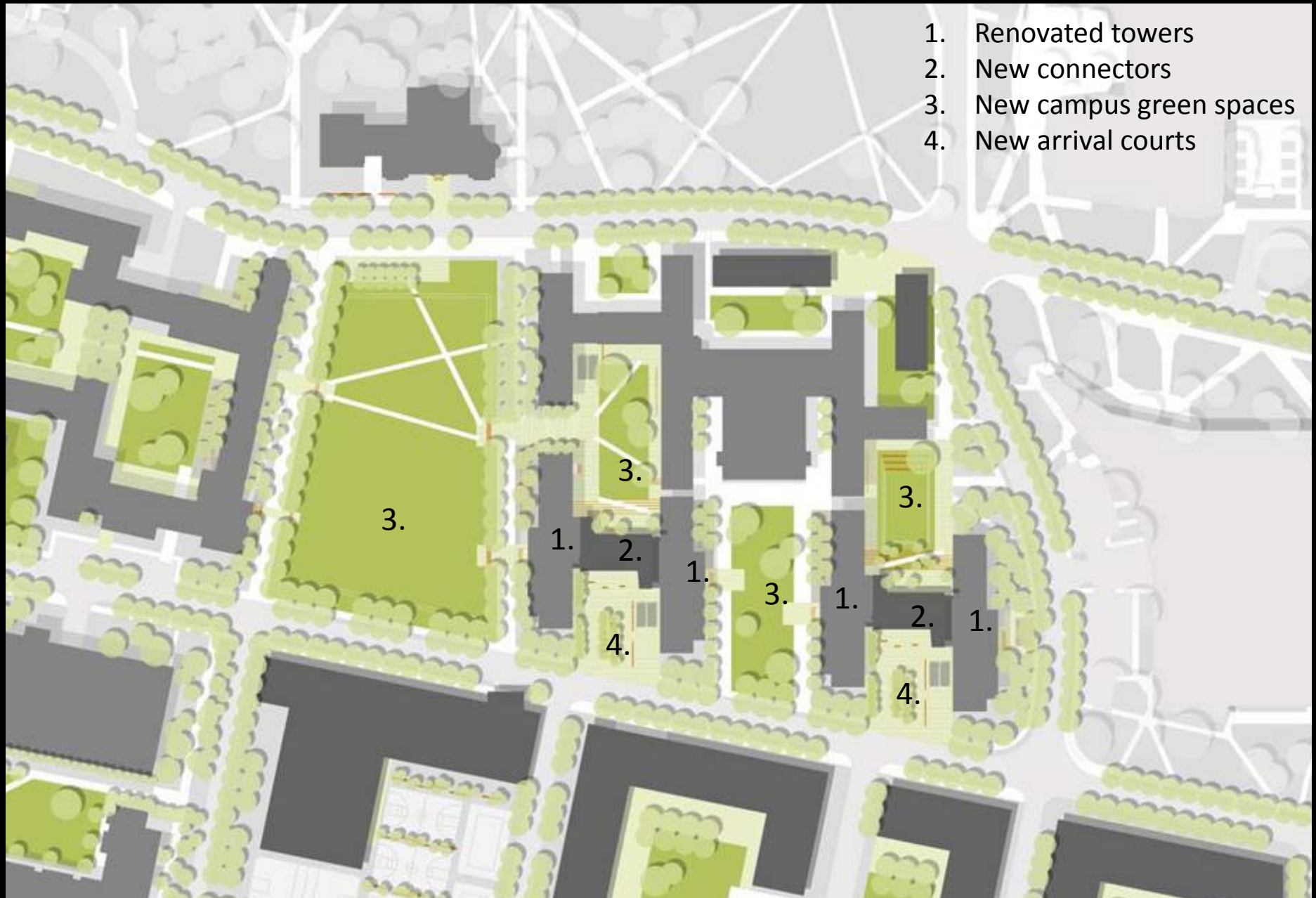
Project Type:
**Addition and
Renovation**

Use Type:
**Residential,
Institutional,
Educational,**

A17.02



Aerial view of the South High Rises (before)



A17.04

Construction begins on one of the additions. The project was phased, with one building being completed first, followed by the second. Park-Stradley Hall opened in August of 2012; Smith Steeb welcomed its first residents in August of 2013.



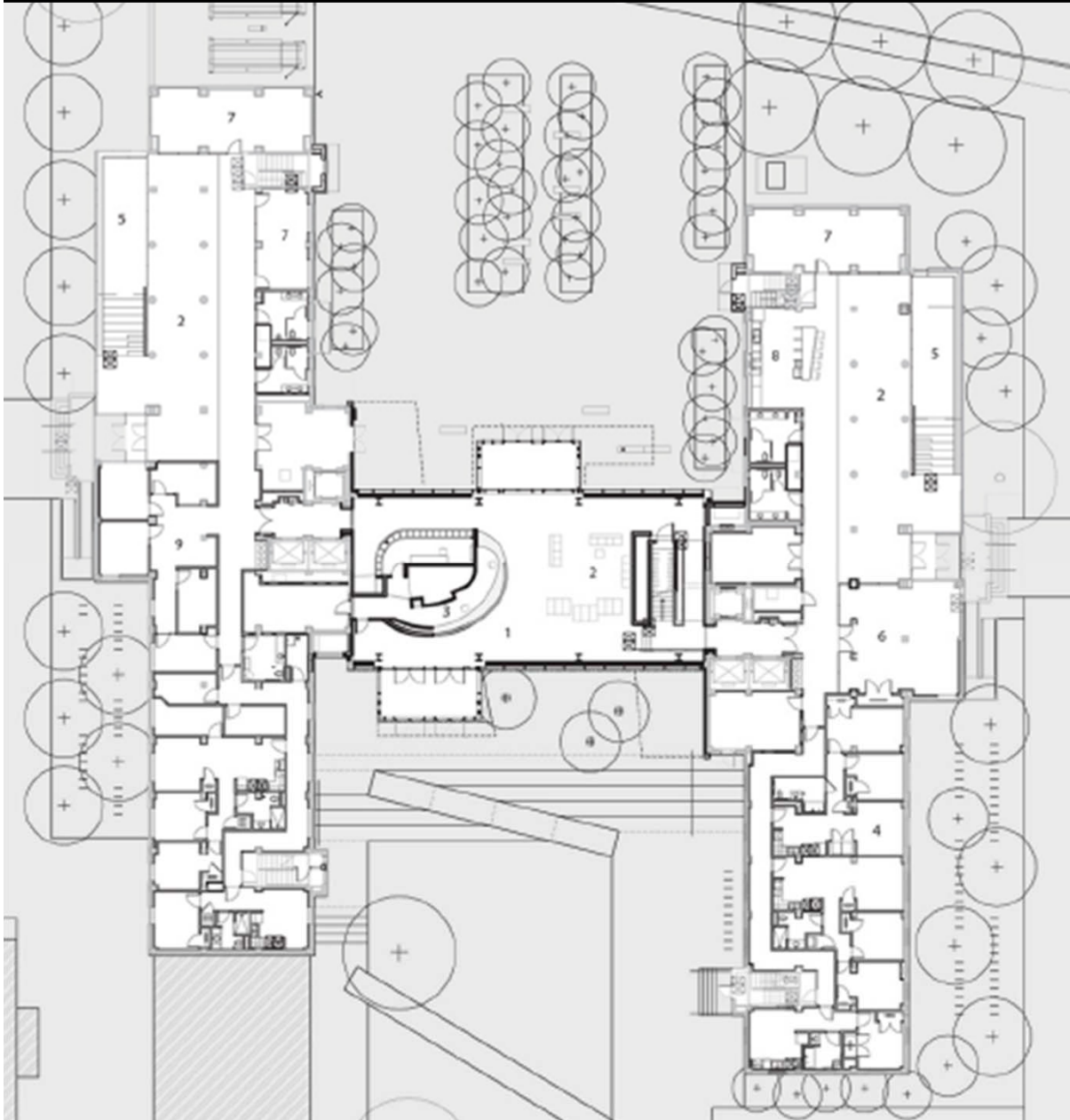
A17.05



Top: Construction progresses on the “bridge”

Right: Just a few days prior to student move-in day





First floor plan

1. Lobby
2. Lounge
3. Information
4. Bedroom
5. Open to below
6. Classroom
7. Meeting
8. Kitchen
9. Offices

Floor Plans

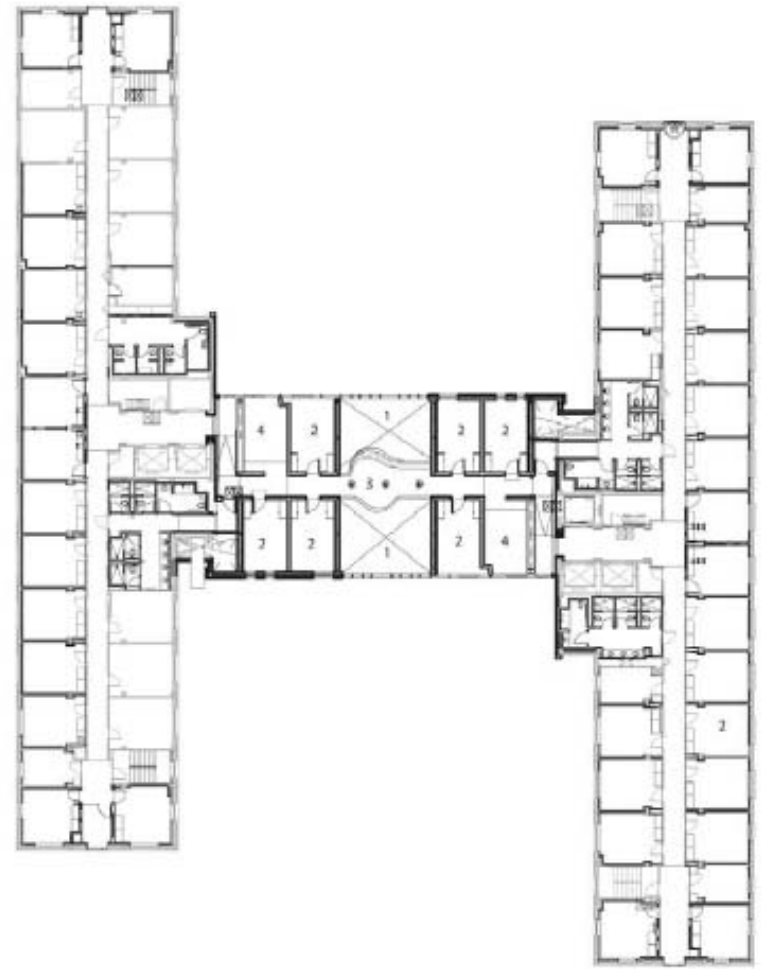
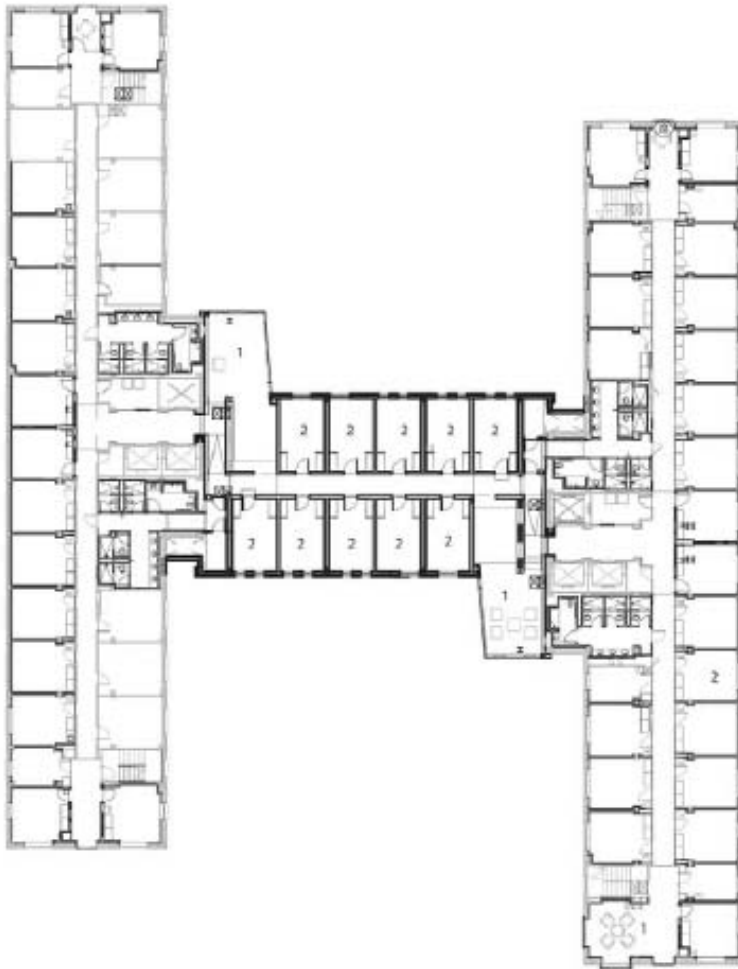
A17.07

Typical floor 3-9

- 1. Lounge
- 2. Bedroom

Floor 11

- 1. Open to below
- 2. Bedroom
- 3. Study Bridge
- 4. Lounge



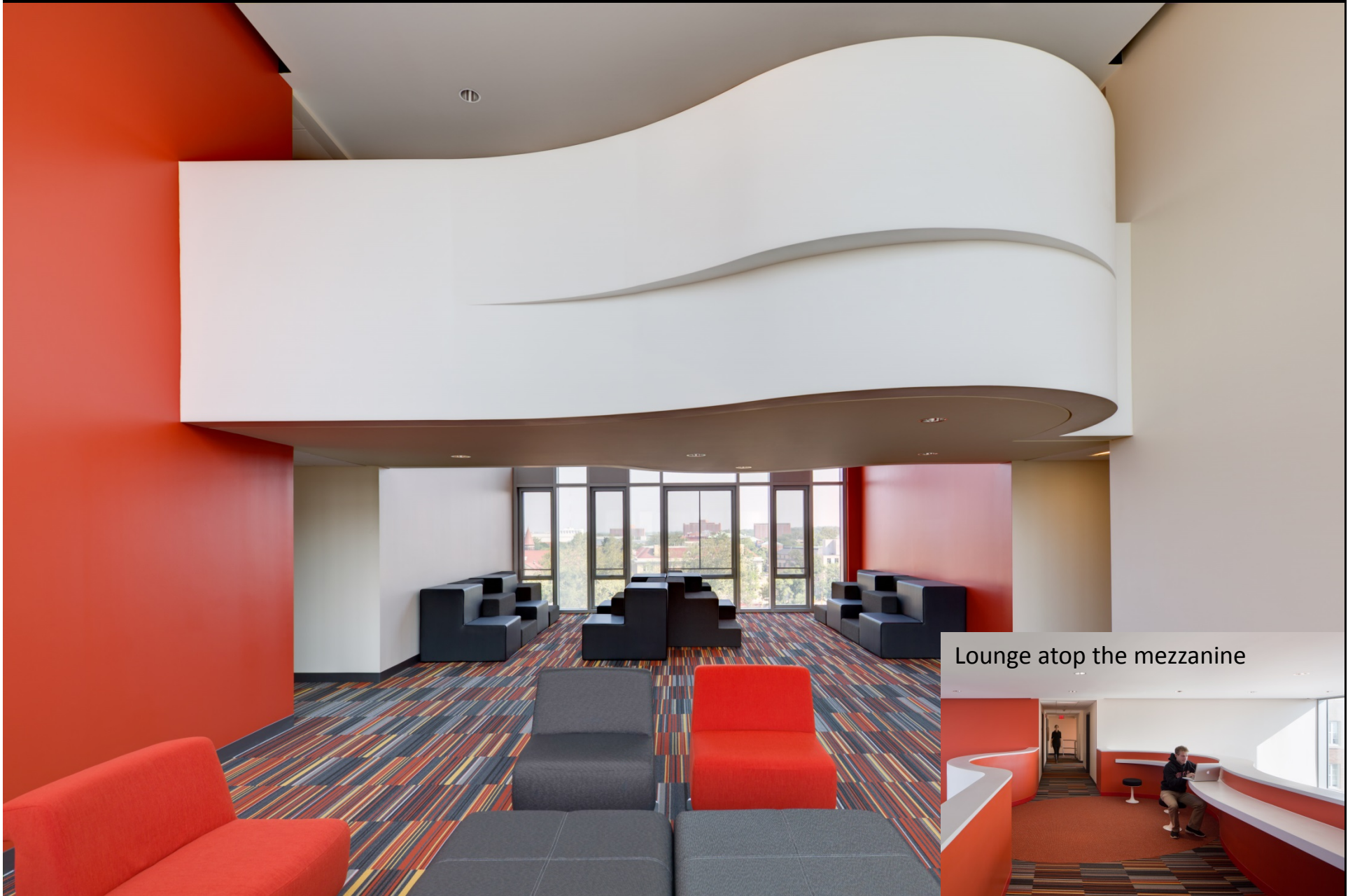


Above: a view of an existing hallway prior to renovation

Right: A transformed corridor with natural light and a small study lounge at the end



A17.08





A17.11



Gathering spaces of varied size, scale, and location

A17.12





**Renovated lounge and new stair that
opens to the ground floor**

A17.14



View from the ground floor; the double-height provides daylight and a connection to the lounge above

A17.15

